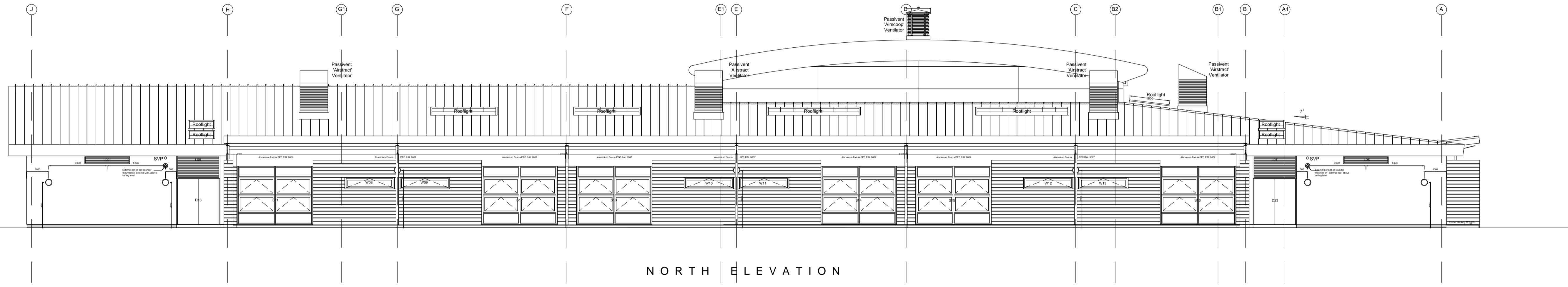
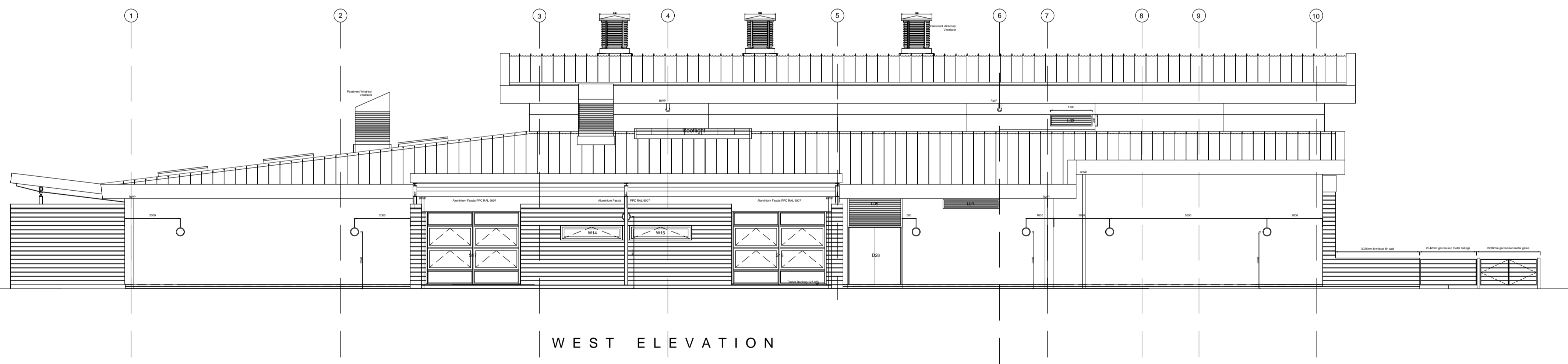




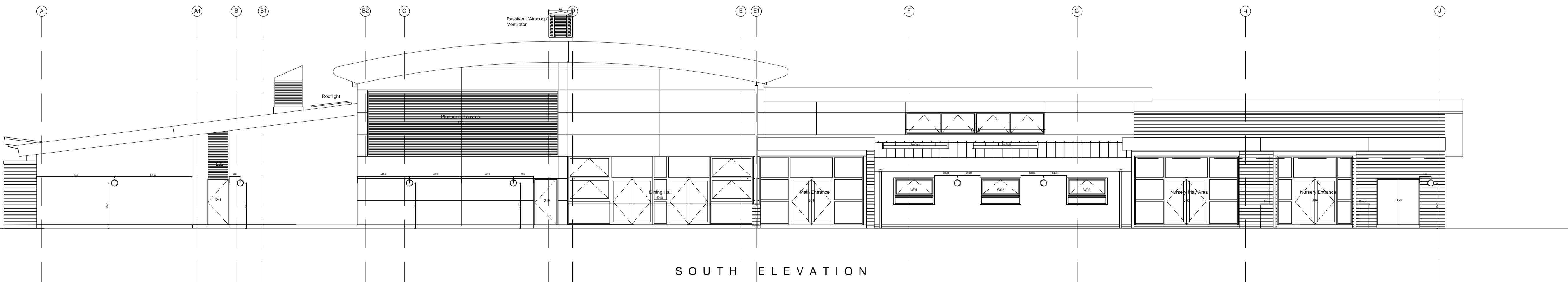
EAST ELEVATION



NORTH ELEVATION



WEST ELEVATION



SOUTH ELEVATION

- Materials:
- Roof: EUROSEAM (ESA400) in mill finish aluminium.
 - Facias/Gutters/Rain Water Pipes: Polyester powder Coated Aluminium Colour: Dark Grey
 - Planroom Louvers: Finish: Polyester powder Coated Metal Silver
 - Timber Cladding: Siberian Larch Rainscreen cladding. Finish: Natural
 - Insulated render system: Rockshield decorative render coat. Colour: White.
 - Glazed Screens and Windows: Composite framed windows with timber interior and aluminum exterior finish. Colour: Dark Grey.

Issue	Date	Details
1		

• all dimensions to be checked on site
 • do not scale from drawings

DATE	SCALE	DRAWN
PROJECT	NO.	ISSUE

West Lothian Council
 Construction Services
 Housing, Construction & Building Services
 West Lothian Civic Centre
 Howden South Road, Livingston EH54 6FF
 Project: Pumpherton and Uphall Station Primary School
 Phase 2
 4 Classroom Extension
 with Community Library

Drawing: Existing Elevations

date	scale(s)	drawn
Feb 2015	1:100 @ A1	MMCH
project no.	drawing no.	issue
ED13004	05	