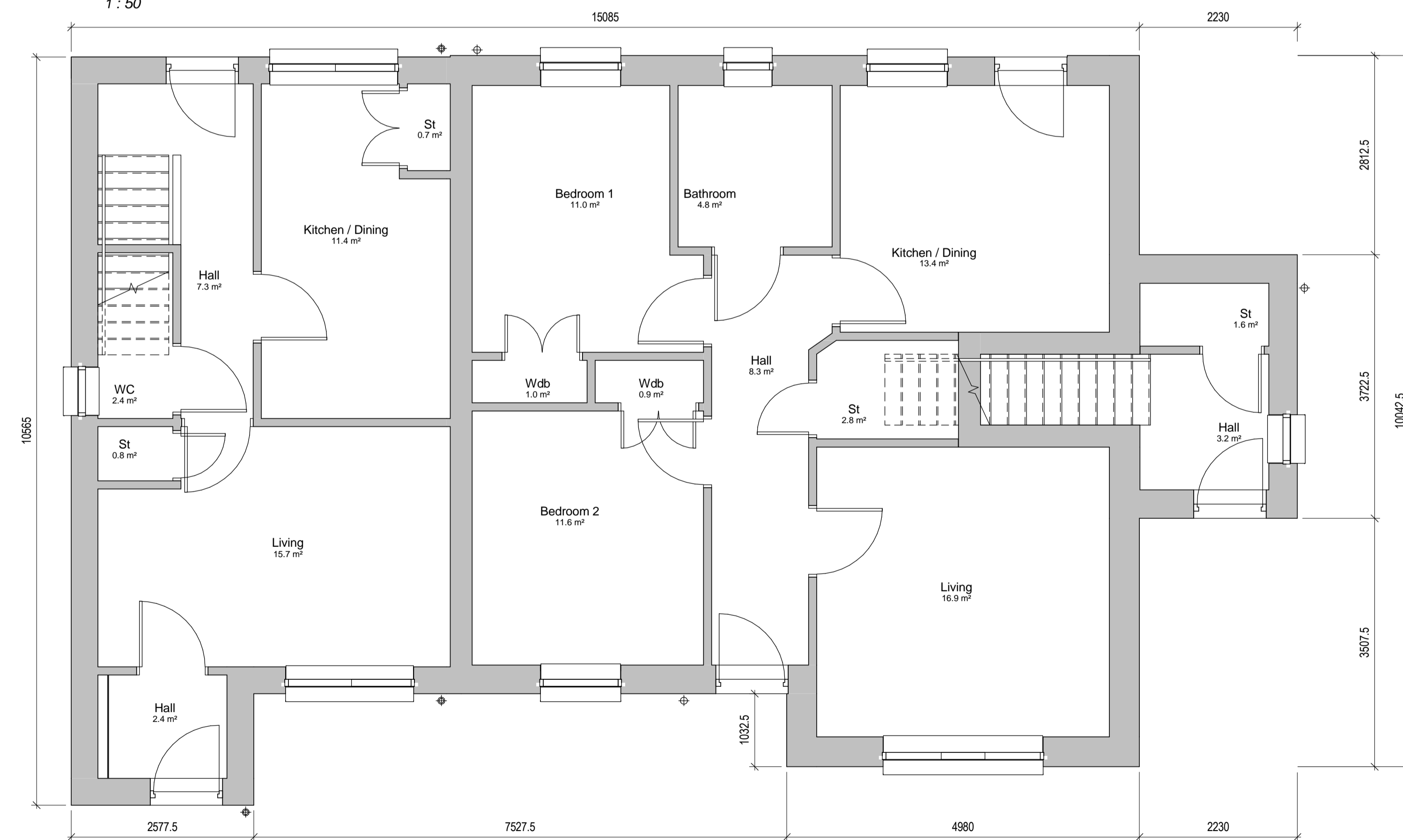


1ST FLOOR PLAN
 40.96m²
 2Bed / 4Pers House
 HOUSE TYPE C1 (LH)
 GIFA 84.79m²
Block 16 - First Floor Plan
 1 : 50

1ST FLOOR PLAN
 2Bed / 4Pers Cottage Flat
 HOUSE TYPE B1 (LH)
 GIFA 84.43m² (inc stair)
 GIFA 74.62m² ex stair
 STORAGE = 5.5m²



Gd. FLOOR PLAN
 43.83m²
 2Bed / 4Pers House
 HOUSE TYPE C1 (LH)
 GIFA 84.79m²
 STORAGE = 5.2m²
Block 16 - Ground Floor Plan
 1 : 50

Gd. FLOOR PLAN
 2Bed / 4Pers Cottage Flat
 HOUSE TYPE B (LH)
 GIFA 75.01m²
 STORAGE = 4.7m²

Rev	Date	Notes

RISK REGISTER		
No.	Date	Description

NOTES

DO NOT SCALE
 The Contractor must check & verify all Site & Building Dimensions, Levels & Sewer Inverts at DCM's before commencing work.
 This Drawing must be read with the NBS Contract specification and any related Structural Engineer or Specialist Contractors Drawings.
 COPYRIGHT:
 The information contained on this drawing is the sole copyright of anderson bell + christie & may not be reproduced without express written permission.
 Anderson Bell Christie Architects Licence number for copy or display of OS Data is LIG0388.

PLANNING

West Lothian Lot 4 - Drumshoreland			
McTaggart Constuction Ltd for West Lothian Council			
Block 16 - GA Floor Plans			
1113	AL(0)1601		
MS	Sept 2015	DR	

anderson bell+christie
 architects

382 Great western Road
 Glasgow G4 9HT
 T:(+44) 0141 339 1515
 F:(+44) 0141 339 0505
 E:gen@andersonbellchristie.com
 W:www.andersonbellchristie.com