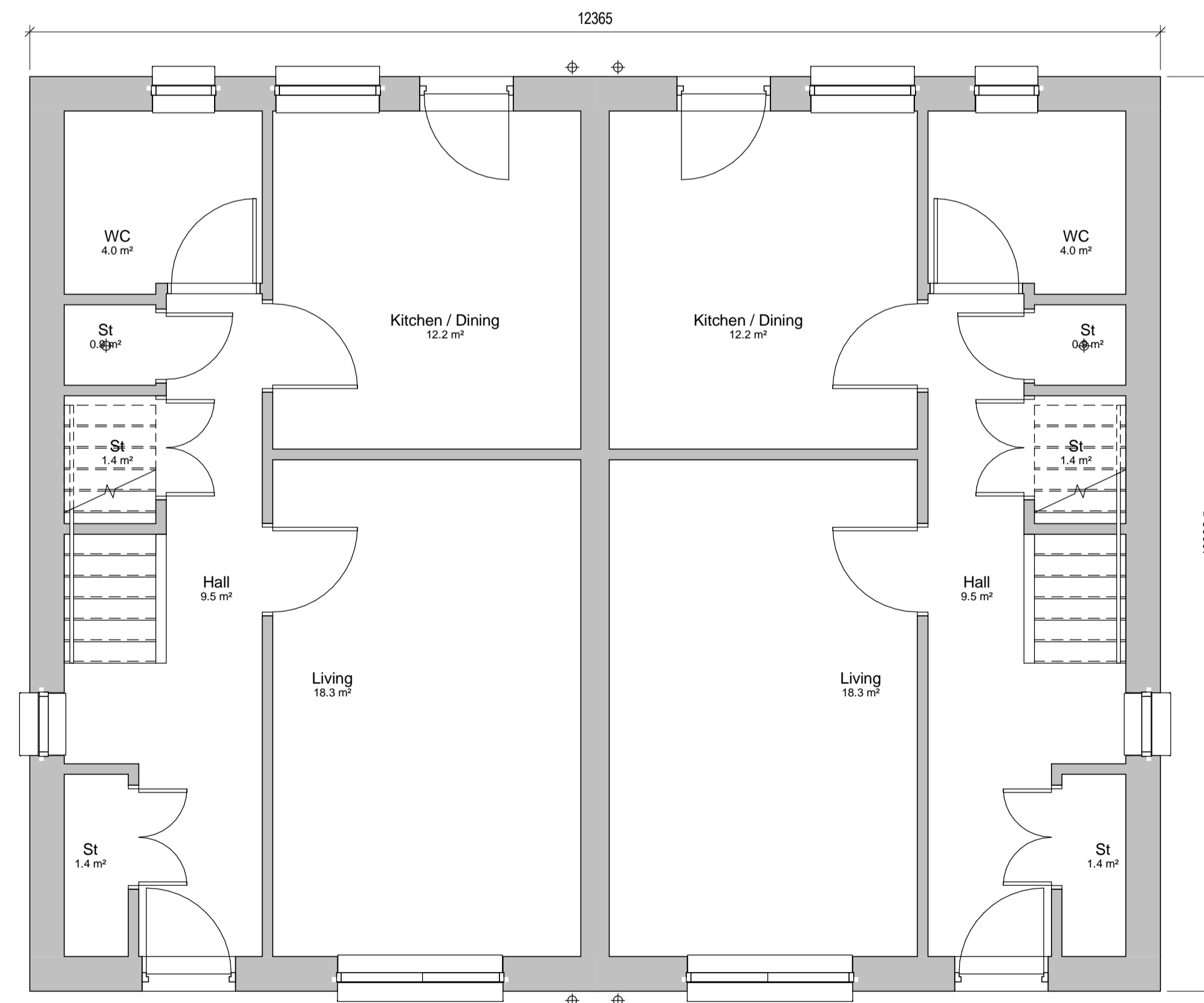


1ST FLOOR PLAN
52.23m²
3Bed / 6Pers House
HOUSE TYPE D1 (LH)
GIFA 104.46m²
Block 21 - First Floor Plan
1 : 50

1ST FLOOR PLAN
52.23m²
3Bed / 6Pers House
HOUSE TYPE D1 (LH)
GIFA 104.46m²



Gd. FLOOR PLAN
52.23m²
3Bed / 6Pers House
HOUSE TYPE D1 (LH)
GIFA 104.46m²
STORAGE = 7.3m²
Block 21 - Ground Floor Plan
1 : 50

Gd. FLOOR PLAN
52.23m²
3Bed / 6Pers House
HOUSE TYPE D1 (LH)
GIFA 104.46m²
STORAGE = 7.3m²

Rev	Date	Notes

RISK REGISTER	
No.	Description

NOTES

DO NOT SCALE
The Contractor must check & verify all Site & Building Dimensions, Levels & Sewer Inverts at DCM's before commencing work.
This Drawing must be read with the NBS Contract specification and any related Structural Engineer or Specialist Contractors Drawings.
COPYRIGHT:
The information contained on this drawing is the sole copyright of anderson bell + christie & may not be reproduced without express written permission.
Anderson Bell Christie Architects' Licence number for copy or display of OS Data is LIG0388.

PLANNING

Project West Lothian Lot 4 - Drumshoreland			
Client McTaggart Construction Ltd for West Lothian Council			
Drawing Block 21 - GA Floor Plans			
20 No. 1113	Doc No. AL(0)2101	Rev 	
Date MS	Issue Sept 2015	Drawn DR	

anderson bell+christie
architects

382 Great western Road
Glasgow G4 9HT
T:(+44) 0141 339 1515
F:(+44) 0141 339 0505
E:gen@andersonbellchristie.com
W:www.andersonbellchristie.com